

1 Introduction

This document describes how to configure the Windows 2000 DHCP service to provide DHCP parameters to the Sunray clients.

2 Windows Configuration

Most of the configuration work can be done through the DHCP manager, found under `programs -> Administrative Tools -> DHCP`.

2.1 Defining a DHCP Scope

<insert description here>

2.2 Adding general DHCP Options

<insert description here>

2.3 Defining Sunray Specific Options

With the scope defined and the default route option added, you now need to define the parameters specifically required by the sunray devices. DHCP supports Vendor Specific Options which allow you to embed parameters which are not defined in the DHCP standard into the DHCP packets. There are a number of options¹ for the sunray desktop units (DTUs), but the only one which is mandatory is the IP address of the sunray server. Vendor specific data such as the sunray server's IP address and firmware version numbers are grouped under a Vendor Class ID. The sunray DTUs will look in the DHCP data they receive from the DHCP server for the Class to which they belong. The Class ID for the sunray DTUs is `SUNW.NewT.SUNW`. Following the Class ID are the options for that class. For the sunray server's IP address the option number is 21. The parameter for option 21 is an IP address. The next few sections show a step-by-step guide how to define the sunray class and add the server's IP address option.

¹ For a full list of all the options for the `SUNW.NewT.SUNW` class see the [SunRay Administration Guide](#)

2.3.1 Defining the `SUNW.NewT.SUNW` Class

Defining the sunray class can be done through the DHCP manager GUI. Starting from the DHCP manager, select the DHCP server and right-click. From the popup menu select 'Define Vendor Classes'. (Figure 1.)

Within the DHCP Vendor Classes dialog, click 'add'. (Figure 2.)

Within the New Class dialog, enter 'Sun Microsystems' as the name of the class and enter a description of your choosing. Click on the right-hand side of the data entry box, under ASCII and enter the value `SUNW.NewT.SUNW`. (Figure 3.) Click 'OK' when done.

Once you've added the new class, close the 'Define Vendor Classes' dialog.

2.3.2 Defining the Sunray Server's IP Option

Defining the DHCP options for the Vendor Classes can be done through the DHCP manager GUI. Starting from the DHCP manager, select the DHCP server and right-click. From the popup menu select 'Set Predifined Options'. (Figure 4.)

Within the Option Class combo box select the Vendor Class 'Sun Microsystems' and then click 'add'. (Figure 5.)

Enter 'Sunray Server's IP Address' for the name of the option, select IP Address for the data type and enter 21 as the value for the option code. (Figure 6.)

Once you have entered the information for the option type, click 'ok'. Close Predifined Options' dialog by clicking 'ok'

2.4 Adding SunRay Secific Options

Due to a bug in the DHCP manager GUI adding option 21, from the newly defined class, to a DHCP scope has to be done via the command line. The following commands can be seen in (Figure 7.)

From a command shell type 'netsh'.

Type dhcp to switch to the DHCP manager.

Type server \\<your server name> to select the server that you wish to configure. The server name is the NetBios name of your computer.

Type scope <IP Address of Scope> to select the DHCP scope you wish to configure.

Type:

```
set optionvalue 21 IPADDRESS vendor="Sun Microsystems" <IP Address>
```

the <IP Address> is the IP address of your sunray server in dot notation.

Once the command has completed successfully, type exit to return to the DOS prompt.

Returning to the DHCP manager GUI, select the DHCP server, right-click and select refresh to view the changes you have made. The newly added option will be located under Scope Options. (Figure 8.)

Figure 1. Selecting Define Vendor Options

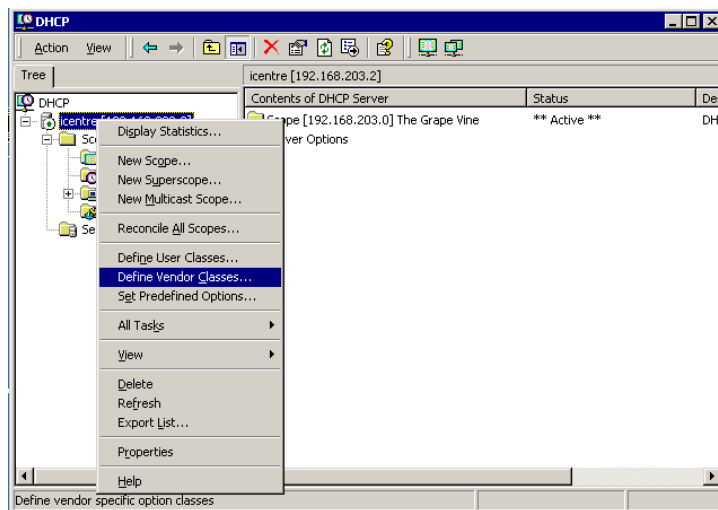


Figure 2. DHCP Vendor Classes Dialog

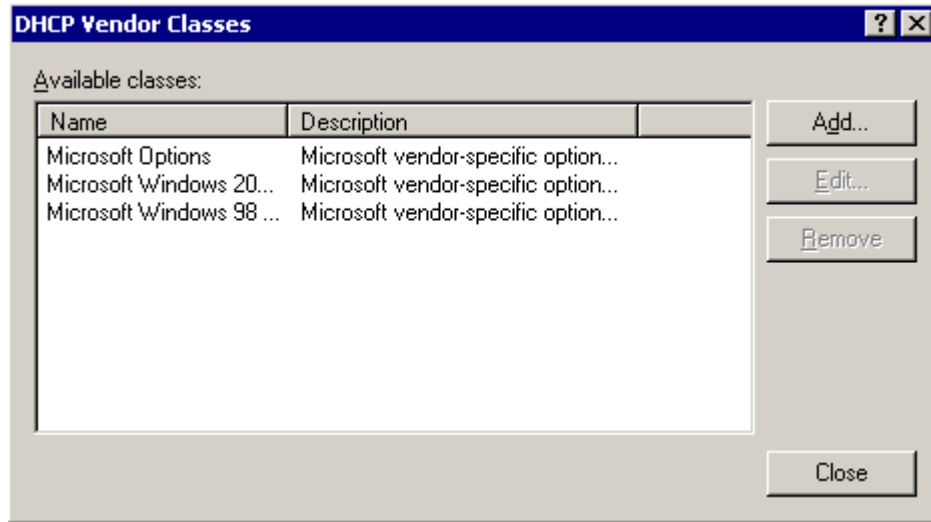


Figure 3. Adding a new Vendor Class

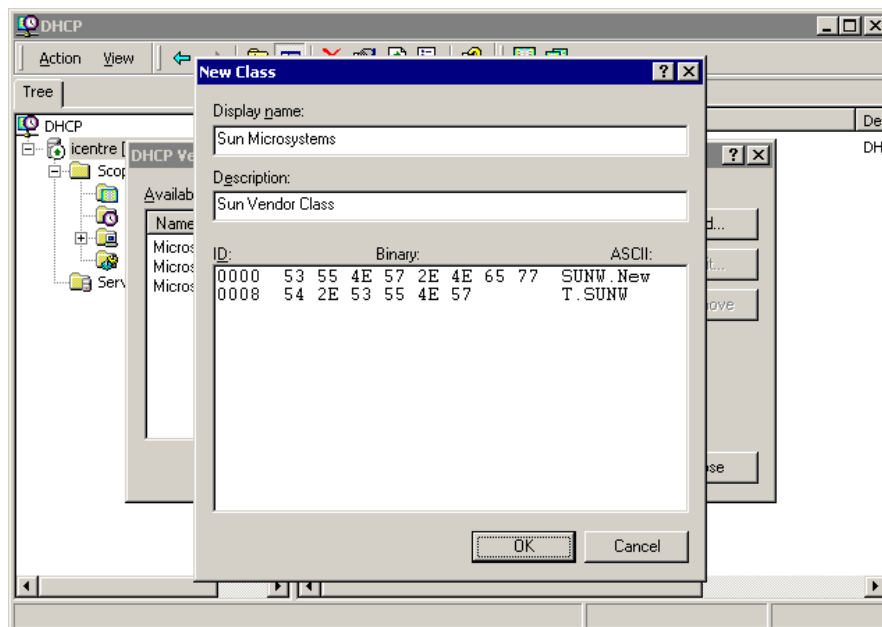


Figure 4. Setting Predifined Options

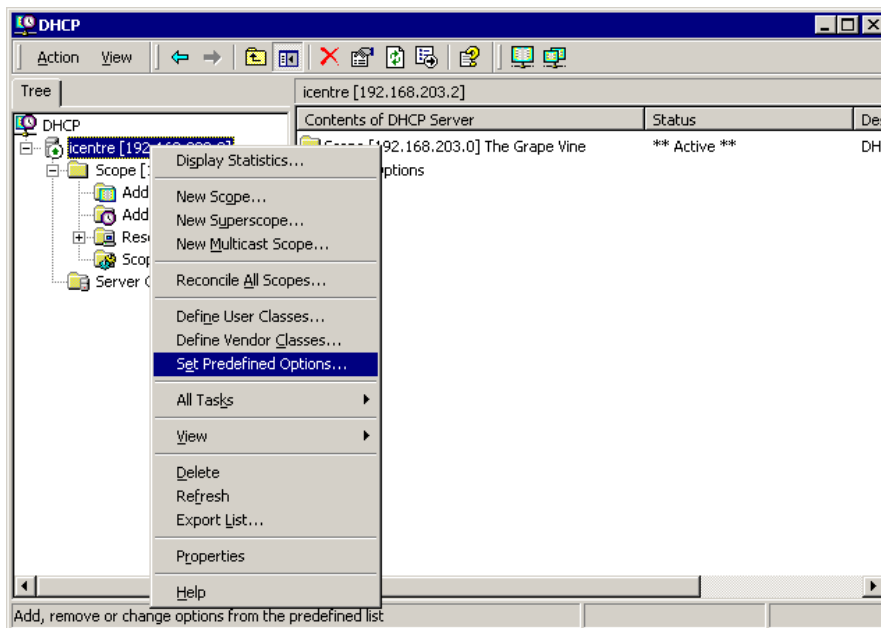


Figure 5. Adding Option 21

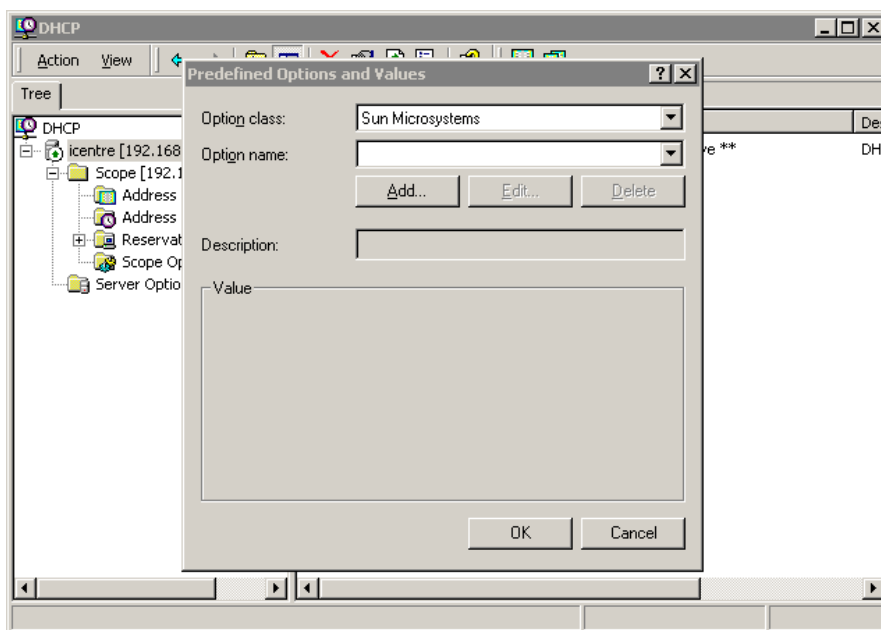


Figure 6.

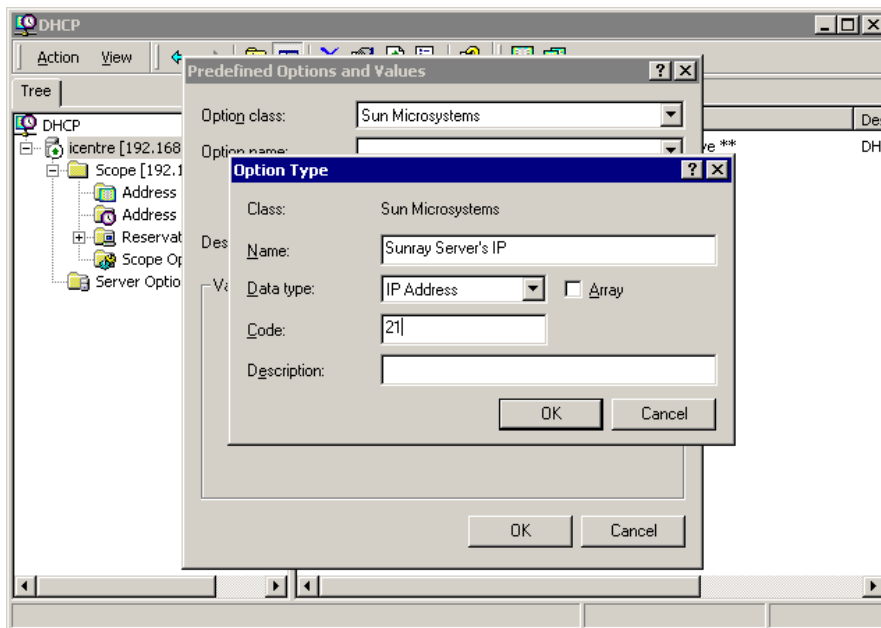


Figure 7.

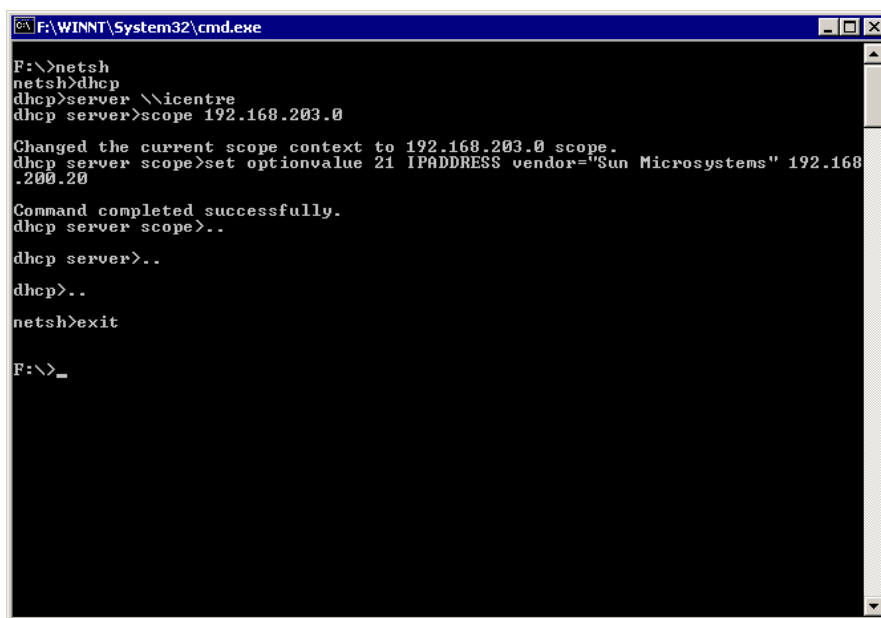


figure 8.

